

# CRYSTAL SPRINGS UPLANDS SCHOOL

400 Uplands Drive, Hillsborough, CA 94010-6999

Phone 650.342.4175 • Fax 650.342.7623 • <http://www.csus.org> • CEEB 051173

## 2010-2011 Profile

### COURSE REQUIREMENTS AND ADVANCED OFFERINGS

#### ENGLISH (4 years required)

English III (HL)  
English Literature (AP)

#### HISTORY (3 years required)

US History (AP)  
European History (AP)\*  
Art History (AP)\*  
Government and Politics:  
American & Comparative (AP)

#### MATH (3 years required)

Pre-Calculus / Calculus A (HL)  
Computer Science A (AP)  
AB Calculus (AP)  
BC Calculus (AP)  
Advanced Topics in Math (HL)  
*Topics include linear algebra, differential equations and multivariable calculus*

#### LAB SCIENCE (3 years required)

Biology (AP)  
Chemistry (HL)  
Physics (HL)  
Physics, Engineering & Tech (HL)  
*College-level course replacing AP Physics C*

#### LANGUAGE (3 years required)

French III (HL)  
French Language (AP)  
Francophone Literature (HL)  
Spanish III (HL)  
Spanish Language (AP)  
Spanish Literature (AP)

#### FINE ARTS (2 years required)

Studio Art (AP)  
Music Theory (AP)

#### OTHER GRADUATION REQUIREMENTS

- 3 years of human development
- 3 years of physical education
- successful completion of Senior Project

*\* offered in alternate years*

### THE SCHOOL

Founded in 1952, Crystal Springs Uplands School is an independent, coeducational, college preparatory day school located on a 10-acre suburban campus on the San Francisco peninsula. Serving grades 6-12, CSUS provides an intimate, collaborative community that encourages students to pursue their passions, explore new interests, build confidence, develop compassion and thrive in an environment of academic excellence.

With a 30% acceptance rate, CSUS enrolls 350 students from 58 elementary schools and 43 middle schools. Our student body reflects CSUS's strong commitment to cultural, social and socioeconomic diversity. 48% of the student community identifies as students of color and our generous financial aid program awarded \$2M in grants to 23% of the student body.

Crystal Springs Uplands School is accredited by the California Association of Independent Schools and is a member of the Western Association of Schools and Colleges, the National Association of Independent Schools, A Better Chance and People of Color in Independent Schools, among others.

### CURRICULUM

Given the rigorous academic demands of CSUS, freshmen and sophomores take five academic courses. In order to maintain a balanced course load, **juniors and seniors are strongly encouraged to take four academic courses only.** Students need 18 credits total in order to graduate.

### GPA AND CLASS RANK

Grade point average (GPA) is calculated using all academic courses (PE, non-AP Fine Arts and non-CSUS courses excluded) and is cumulative from the fall semester of 10<sup>th</sup> grade onward. Advanced Placement (AP) and Honors-level (HL) courses are weighted by 0.3, as are fifth academic courses taken during junior and senior years. *CSUS does not rank students.*

### INSTRUCTION

Total student enrollment: 350	Faculty: 59
Upper school enrollment: 250	Middle school enrollment: 100
Student-Teacher Ratio: 9-1	Average class size: 14 students
Percent of faculty with advanced degree: 65%	
Average number of years teaching at CSUS: 12	

### ADVANCED PLACEMENT AND HONORS-LEVEL COURSES *(for Spring 2010)*

# of AP courses: 14	# of HL courses: 8
Students taking AP exams: 118	# of AP exams taken: 355
Percentage scoring 5: 38%	
Percentage scoring 4 or above: 64%	
Percentage scoring 3 or above: 87%	

*\*Beginning in 2010, CSUS reduced the number of AP courses in favor of college-level courses that allow faculty to delve more deeply into topics that are given less emphasis in the AP curriculum.*

Amy Richards  
Head of School  
[arichards@csus.org](mailto:arichards@csus.org)  
ext. 1527

Kelly Sortino  
Director of College Counseling  
[ksortino@csus.org](mailto:ksortino@csus.org)  
ext. 1513

Jennifer Carleton  
Assoc. Director of College Counseling  
[jcarleton@csus.org](mailto:jcarleton@csus.org)  
ext. 1596

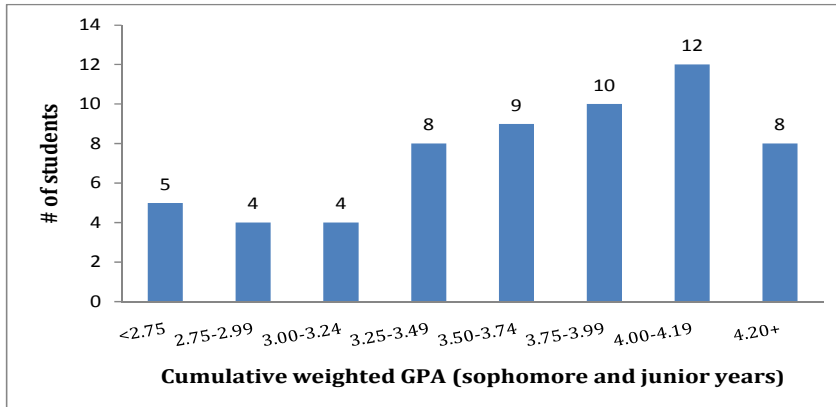
Jeannie Fischer  
Registrar  
[jfischer@csus.org](mailto:jfischer@csus.org)  
ext. 1529



# CSUS CLASS OF 2011

The following information is current as of August 2010

**Class size: 60 students Mean GPA: 3.61**



Weighted GPA range	# of students	Mean SAT CR	Mean SAT Math	Mean SAT WR	Mean SAT total
4.20+	8	758	766	776	2300
4.00-4.19	12	734	732	746	2213
3.75-3.99	10	694	726	714	2134
3.50-3.74	9	669	709	699	2076
3.25-3.49	8	657	672	667	1997
3.00-3.24	4	635	665	650	1950
2.75-2.99	4	565	590	580	1735
<2.75	5	492	536	496	1524
<b>TOTAL</b>	<b>60</b>	<b>670</b>	<b>692</b>	<b>687</b>	<b>2050</b>
<i>National percentile</i>		<i>92nd</i>	<i>93rd</i>	<i>95th</i>	

## NATIONAL MERIT COMPETITION

30 students in the Class of 2011 were recognized as National Merit scholars. Three students were named National Hispanic scholars and one student was named a National Achievement scholar.

### SAT TEST SCORES

Section	Mid 50%	Mean
CR	620-740	670
Math	650-740	692
Writing	640-770	687
Composite	1900-2220	2050

### ACT TEST SCORES

Section	Mid 50%	Mean
English	29-34	32
Math	28-34	31
Reading	29-34	31
Science	26-33	29
Composite	29-33	31

### SAT SUBJECT TEST SCORES

Subject	Mid 50%	Mean
Biology-M	700-780	740
Chemistry	670-770	716
Literature	700-770	737
French	590-750	673

Subject	Mid 50%	Mean
Math II	690-780	728
Physics	670-740	701
Spanish	560-660	626
US History	600-750	682

## COLLEGE MATRICULATION

From 2006-2010, three or more CSUS students have matriculated at the following institutions:

- Stanford (32)
- UC – San Diego (12)
- UC – Davis (10)
- USC (10)
- UC – Los Angeles (9)
- Boston University (9)
- Princeton (6)
- Brown (6)
- Dartmouth (6)
- Williams (6)
- UC – Berkeley (6)
- Tufts (6)
- Washington Univ – St. Louis (6)
- New York University (6)
- George Washington (6)
- Yale (5)
- University of Pennsylvania (5)
- Northwestern (5)
- MIT (4)
- Pomona (4)
- Cornell (4)
- Carleton (4)
- Claremont McKenna (4)
- Scripps (4)
- Santa Clara (4)
- UC – Irvine (4)
- Harvard (3)
- Columbia (3)
- Duke (3)
- Middlebury (3)
- Georgetown (3)
- Carnegie Mellon (3)
- Colby (3)
- University of Edinburgh, UK (3)
- Puget Sound (3)
- UC – Santa Barbara (3)

*98+% of the graduates each year attend 4-year colleges or universities*

Amy Richards  
Head of School  
arichards@csus.org  
ext. 1527

Kelly Sortino  
Director of College Counseling  
ksortino@csus.org  
ext. 1513

Jennifer Carleton  
Assoc. Director of College Counseling  
jcarleton@csus.org  
ext. 1596

Jeannie Fischer  
Registrar  
jfischer@csus.org  
ext. 1529